

Product Catalogue



Tables

Cupboards

Sinks

Trolleys

Racking

Sanitisers

PoS

Misc

Click To Navigate

Tables



[Centre Table](#)
Page 1



[Bakery Knockout Table](#)
Page 1



[Wall Bench](#)
Page 1



[Chopping Table](#)
Page 1



[Wall Table Bull Nose](#)
Page 2



[Centre Table Bull Nose](#)
Page 2



[Chefs Table](#)
Page 2



[Dishwasher Table](#)
Page 2



[Stacking Table](#)
Page 3



[Mobile Fillet Table](#)
Page 3



[Poultry Prep Drainer Table](#)
Page 3



[Recycling Station](#)
Page 3



[Meat High Back Table](#)
Page 4



[Narrow De-Spitting Table](#)
Page 4



[Scale Table](#)
Page 4



[Mobile Rotisserie Table](#)
Page 4

Most of our product range can be produced to bespoke sizes - Please ask for details

Contents

Click to
View

Tables



Drop Leaf Table
Page 5



Flat-Pack Table
Page 5



Drawer Table
Page 5



Preparation Table
Page 6

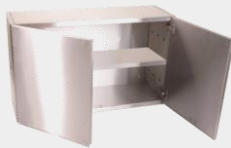


Cutting Table
Page 6

Cupboards



Floor Cupboard
Page 7



Wall Cupboard
Page 7



Stainless Steel
Cabinets Page 8



Warming Cupboard
Page 8



Checker Desk
Page 7



Restaurant
Server Cabinet
Page 7



Cupboard with
Drawers Page 8



Tall Cupboard
Page 8

Sinks



Knee Lever Sink
Page 9



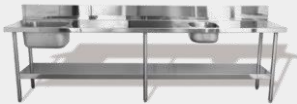
Hand Wash Sink
Page 9



Sink Unit Page 9



Mop Sink Page 9



Canteen Sink
Page 10



Slim Wash Station
Page 10



Bain Marie
Page 10



Wet Fish Drip Tray Page 10



Page 11



Page 11



---Page 11



---Page 11

Contents

Click to
View

Trolleys



Back Stock Cart
Page 12



Two Tier Trolley
Page 12



Six Wheel Stocking Cart
Page 12



Security Cage Trolley
Page 12



Flat Bed Trolley
Page 13



Waste Collection Trolley
Page 13



Cutlery Trolley
Page 13



Fifteen Tray Bakery Rack
Page 13



Warehouse Steps
Page 14



Merchandising Trolley – Single Step
Page 14



Three Step Stocking Trolley
Page 14



Inspection Trolley
Page 14



Instrument Trolley
Page 15



Sheet material Transportation
Page 15



Store Management Table
Page 15



Hypermarket Trolley
Page 15

Trolleys



Two Step Stocking
Table Page 16



Bowl Trolley
Page 16



School Post Trolley
Page 16



Plastic Bin Rack
Trolley Page 16



Bakers Basket
Trolley Page 17



Half Moon Mobile
Trough Page 17



Heavy Duty Tank
Trolley Page 17



Bin Store
Production Trolley
Page 17



Plastic Trough
Trolley Page 18



Cash Trolley Page 18



Short Back-stock Cart
Page 18



Triple Tray Trolley
Page 18



Low Level Trolley
Page 19



Locking Product
Trolley Page 19



Café Clearing Trolley
Page 19



Utility Trolley
Page 19

Contents

Click to
View

Trolleys



Bakery Flour Cart
Page 20



Mobile Filleting
Trolley Page 20



Medical Equipment
Trolley Page 20

Page 20

Racking



Display Racking
Page 21



Food Warmer
Page 21



Drainage Shelf
Page 21



Food Storage
Rack Page 21



Flat Pack Perforated
Racking Page 22



15 Tray Bakery Rack
Page 22



Bakery Impulse
Tower Page 22



Bakery Impulse
Stand Page 22

Contents

Click to
View

Racking



[Heavy Duty Racking](#)
Page 23



[Keyboard / Pipe Shelving](#) Page 23



[Mobile Chiller Racking](#) Page 23



[Mobile Storage Racking Set](#)
Page 23



[Flat Pack Plain Racking](#) Page 24



[Mobile Tray Racking](#)
Page 24



[Wall Shelf](#)
Page 24



[Nine Tier Bakery Rack](#) Page 24

Sanitisers



[Stand Alone Sanitiser Station](#)
Page 25



[Cleaning Station Shelves](#) Page 25



[Foot Pedal Operated Dispenser](#) Page 25



[Mobile Sanitiser Station](#) Page 25



[Wall Mounted Dispenser](#) Page 26



[Wall Mounted Gel Bracket](#) Page 26



[Free Standing IR Dispenser](#) Page 26



[Door Entry Sanitiser Station](#) Page 26

Contents

Click to
View

Point Of Sale



[Ticket Holders](#)
Page 27



[Display Gondola](#)
Page 27



[Mirror Polished Signs](#)
Page 27



[PoS Labels](#)
Page 27



[Cosmetics
Presentation Stand](#)
Page 28



[Digital Store Finder](#)
Page 28



[Coffee Mini Bar](#)
Page 28

Page 28

Miscellaneous



[Boot Wash Station](#)
Page 29



[Café Chair – Etched Logo](#)
Page 29



[LED Light Wall](#)
Page 29



[Mannequin
Stand](#) Page 29

Contents

Click to
View

Miscellaneous



[Baguette Slicer](#)
Page 30



[Cake Display](#)
Page 30



[Agricultural Machinery](#) Page 30



[Heavy Duty Sack Cart](#)
Page 30

Test Cell Mover

Tables



Centre Table

WIDTH	DEPTH	CODE (600)	CODE (700)
600	600 or 700	MC2-6060	MC2-7060
900	600 or 700	MC2-6090	MC2-7090
1200	600 or 700	MC2-6012	MC2-7012
1500	600 or 700	MC2-6015	MC2-7015
1800	600 or 700	MC2-6018	MC2-7018



Bakery Knockout Table

WIDTH	DEPTH	CODE
1000	550	MCI0049
1500	750	MCI0048



Wall Bench

WIDTH	DEPTH	CODE (600)	CODE (700)
600	600 or 700	MC2-6060R	MC2-7060R
900	600 or 700	MC2-6090R	MC2-7090R
1200	600 or 700	MC2-6012R	MC2-7012R
1500	600 or 700	MC2-6015R	MC2-7015R
1800	600 or 700	MC2-6018R	MC2-7018R



Chopping Table

WIDTH	DEPTH	HEIGHT	CODE
1595	710	935	MCI0059
Changeable cutting board and chopping block			
Polypropylene cutting surface			

Tables



Wall Table Bull Nose



Center Table Bull Nose

WIDTH	DEPTH	CODE
1200	600	
Manufactured from 304 DP Stainless Steel		

WIDTH	DEPTH	CODE
1200	660	
Bespoke sizes available		
Integrated knife scabbard		
Complete with storage compartment		



Chef's Table



Dishwasher Tabling

WIDTH	DEPTH	CODE
1070	610	
Bespoke sizes available		

WIDTH	DEPTH	CODE
1500	600	
Manufactured from 304 DP Stainless Steel		

Tables



Stacking Table

WIDTH	DEPTH	CODE
940x500	PLAIN	MC7-5094A
H = 360	PERFORATED	MC7-5094B
Easy to assemble flat pack design		
Plan or perforated shelving available		



Mobile Fillet Table

WIDTH	DEPTH	CODE
900	450	
H = 870		



Poultry Prep Drainer Table

WIDTH	DEPTH	CODE
1595	710	
Extra Height Available		
Fully welded construction 304 Stainless Steel Frame		
Fitted with four Rubber Adjustable Feet		



Recycling Station

WIDTH	DEPTH	CODE
600		
Can Crusher & Waste Bins as optional extras		
Designed to recycle food, drink & Packing materials		
Additional shelving available		

Tables



Meat High Back Table

WIDTH	DEPTH	CODE
940	500	
H = 360		
Easy to assemble flat pack design		
Plan or perforated shelving available		



Narrow De-Spitting Table

WIDTH	DEPTH	CODE
750	600	
Manufactured from hygienic 304 DP Stainless Steel		
Ideal for use in Supermarkets 'hot food dept.'		



Scale Table

WIDTH	DEPTH	CODE
600	600	MORR0500
Fully welded construction 304 Stainless Steel Frame		



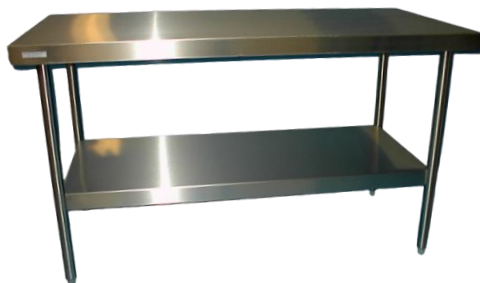
Mobile Rotisserie Table

WIDTH	DEPTH	CODE
973	648	
Fitted with high quality swivel castors		

Tables



Drop Leaf Table



Flat-Pack Table

WIDTH	HEIGHT	CODE
400x400	950	
Easy to assemble flat pack design		
Available with or without casters		

WIDTH	DEPTH	CODE
1200	600	
High Quality Stainless Steel Material		
Flat-Pack construction for easy self assembly		
Bespoke sizes available to suit your requirements		



Drawer Table

Flat-Pack Table

WIDTH	HEIGHT	CODE
1200x600	650	
Easy to assemble flat pack design		
Height adjustable feet		

WIDTH	DEPTH	CODE
1200	600	
High Quality Stainless Steel Material		
Flat-Pack construction for easy self assembly		
Bespoke sizes available to suit your requirements		

Tables



Preparation Table



Cutting Table

WIDTH	DEPTH	CODE
940	420	
Easy to assemble flat pack design		
Available with or without casters		

WIDTH	DEPTH	CODE
1200	600	
Polypropylene cutting surface		
Ideal for use in Butchery & food preparation		



Drawer Options

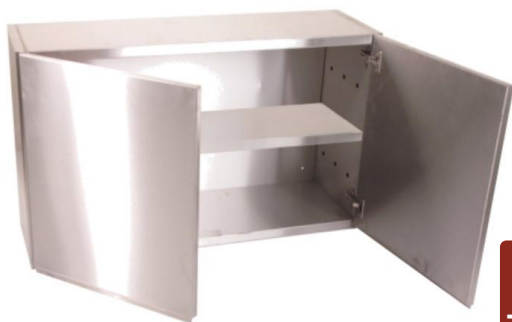
Most Tables can be fitted with optional drawers
Fully welded construction 304 Stainless Steel Frame
Smooth glide bearing runners
Stainless Steel recessed or folded handles

Cupboards



Floor Cupboard

WIDTH	DEPTH	CODE 600mm	CODE 700mm
900	600 or 700	MC4-6090	MC4-7090
1200	600 or 700	MC4-6012	MC4-7012
1500	600 or 700	MC4-6015	MC4-7015
1800	600 or 700	MC4-6018	MC4-7018



Wall Cupboard

WIDTH	DEPTH	HEIGHT	CODE
300	300	600	MC5-3030
500	300	600	MC5-3050
600	300	600	MC5-3060
1000	300	600	MC5-3010

Contents



Checker Desk

WIDTH	DEPTH	CODE
500	500	MORR6600
HEIGHT = 1709		
Fitted with integral lectern		
Security locks on external drawer and door		
Internal drawer and trays are height adjustable		



Restaurant Server Cabinet

WIDTH	DEPTH	CODE
1800	650	
Manufactured from 304 DP Stainless Steel		
Built to customers requirements & specifications		
Fitted with adjustable feet or castors		

Cupboards



Stainless Steel Cabinets



Warming Cupboard

WIDTH	DEPTH	CODE
1200	600 or 700	
1500	600 or 700	
1800	600 or 700	
Optional Bespoke Sizes Available		

HEIGHT	DEPTH	CODE
1250x650	450	
Keep plates & serving dishes warm		
Front & Rear Sliding Double Doors		
Thermostatically Controlled temperature		



Tall Cupboard



Cupboard With Drawers

SIZE	HEIGHT	CODE
1100x550	1850	
Fitted with internal shelving or hanging as required		
Security locks on external door		
Internal drawer and trays are height adjustable		

WIDTH	DEPTH	CODE
1200	650	
Manufactured from 304 DP Stainless Steel		
Built to customers requirements & specifications		
Made in the UK		

Sinks



Knee Lever Sink

WIDTH	DEPTH	CODE
460	410	MCI0060
Complete with Knee Valve		
Manufactured from 304 DP Stainless Steel		
Wall Mounted		



Hand Wash Basin

WIDTH	DEPTH	CODE
457	357	MCI0080
Complete with Lever Type Taps		
Fitted with Adjustable Foot		
Complete with Waste & Overflow		



Double Bowl Sink

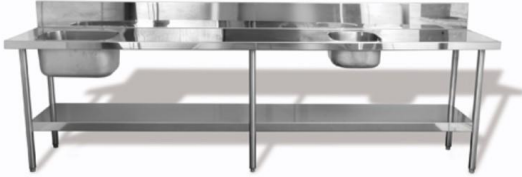
WIDTH	DEPTH	CODE
600 to 1800	700	
Bespoke bowl sizes & positioning available		
Easy to assemble flat pack design		
Manufactured from hygienic 304 DP Stainless Steel		
Complete with under shelf and rear up stand		



Bucket Sink

WIDTH	DEPTH	CODE
500	525	MCI0070
Design for the disposal of dirty water		
Fitted with Bucket Grid		
Complete with Splash back		
Fitted with Adjustable Feet		

Sinks



Canteen Sink

WIDTH	DEPTH	Please contact us for details
460	410	
Highly polished steel surface		
Manufactured from 304 DP Stainless Steel		
Bespoke Sizes Available		



Slim Wash Station

WIDTH	DEPTH	CODE
330	480	MCI0055
Overall height 1980mm		
With Double Spout Twin Feed Lever Action Tap		
Lower shelf for detergent storage		



Bain Marie

WIDTH	DEPTH	CODE
900	870	
Fitted with water feed & drain facility		
Integrated heating element		
Variable thermostatic temperature control		
Complete with under storage shelf		



Wash Trough Sink

WIDTH	DEPTH	CODE
2450	500	MCI0065
Main tray rivet free & fully welded for hygiene		
Extra height available upon request		
Can be connected to local drainage systems		
For use within a supermarket environment		

Sinks



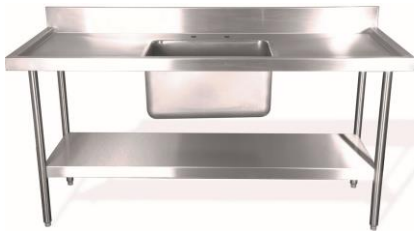
Double Bowl/Double Drainer

WIDTH	DEPTH	Please contact us for details
2600	620	
Manufactured as Flat Pack for Assembly in-situ		
Manufactured from 304 DP Stainless Steel		
Lower Storage Shelf		



Corner bowl +½ with splashback

WIDTH	DEPTH	Please contact us for details
1200	720	
Bespoke Sizes Available		
Deep Drawn Bowl + half round		
Splashback Optional		
Fully welded & finished sink joints		



Single Bowl Belfast Sink

WIDTH	DEPTH	CODE
600	700	MC6-7060
900	700	MC6-7090
1200	700	MC6-7012
1500	700	MC6-7015
1800	700	MC6-7018



Bespoke Catering Sinks

WIDTH	DEPTH	Please contact us for details
Any	Any	
All bowls welded & finished for seamless joints		
Highly polished steel surface		
Bespoke design to suit any requirements		

Trolleys



Back Stock Trolley

WIDTH	DEPTH	CODE
1427	461	MCI0041
2 Fixed & 2 Swivel High Quality Resilex Castors		
Two grab handles complete with bag carrier		
Manufactured in the UK - 12 Month Guarantee		



Two Tier Trolley

WIDTH	DEPTH	CODE
740	490	MCI0054
Overall height 970mm		
Fully welded construction		
Fitted with four non-marking swivel castors		



Six Wheel Stocking Cart

WIDTH	DEPTH	CODE
1150	420	
Large payload platform		
Open accessed cardboard compartment		
Load capacity of up to 330kg		
Highly manoeuvrable – can turn on its centre axis		



Security Cage Trolley

WIDTH	DEPTH	CODE
1000	700	
Locking front access door		
Fixed rear & swivel braked front castors		
Capacity 525 Cubic litres		

Trolleys



Flat Bed Trolley

WIDTH	DEPTH	CODE
750	1130	MCI0061
Sprung loaded platform, height 390mm		
2 fixed & 2 swivel Castors		
Capacity 350kg		
Can Nest when not in use		



Waste Collection Trolley

WIDTH	DEPTH	CODE
1885	664	MCI0043 (Lrg)
Overall height 1655mm		
Slim, Standard or Small Versions Available		
With non-marking braked or non braked castors		
Manufactured from zinc plated mild steel		



Cutlery Trolley

WIDTH	DEPTH	CODE
675	500	
Tray storage shelf below		
Locking braked castors		
Two tier plastic cutlery holders		



Fifteen Tray Bakery Rack

WIDTH	DEPTH	CODE
520	780	
To suit bakery tray size 762 x 457 x 9mm		
Fully sealed tube section to prevent ingress		
Fitted with four swivel castors		

Trolleys



Warehouse Steps

HEIGHT		CODE
1Mtr ~ 3Mtr		
From 4 tread to 12 tread		
Fully mobile complete with lifting bogie		
Adjustable levelling feet		



Merchandising Trolley – Single Step

WIDTH	DEPTH	CODE
1170	620	MCI-0012
SWL: Max 250kg (evenly distributed).		
Platform height: 330mm.		
Built-in waste storage area for cardboard recycling		
Units can be nested when not in use		



Three Step Stocking Trolley

WIDTH	DEPTH	CODE
458	1488	MCI0020
High reach safety rail.		
Integral steps for safe working at height		
Welded castor bosses for additional strength		



Inspection Trolley

CODE	MORR7700
Fully mobile complete with lifting bogie	
Inspection checks in the warehouse environment	
Adjustable feet for levelling unit	
Manufactured in the UK	

Trolleys



Instrument Trolley



Sheet Material Transportation

WIDTH	DEPTH	CODE
180	180	
Also available: 180x240 and 180x300		
Manufactured from hygienic 304 Stainless Steel		
Designed for the Healthcare environment		
Fully welded durable construction		

WIDTH	DEPTH	CODE
503	972	
Overall height 1655mm		
Two fixed and two swivel rubber wheels		
Configurable arms for different material sizes		
Manufactured in the UK		



Store Management Table



Hypermarket Trolley

WIDTH	DEPTH	CODE
460	610	MCI004
Ergonomically designed for safe in-store mobility		
Complete with four removable plastic trays		
Optional Bag Holder also available		

WIDTH	DEPTH	CODE
580	1101	SAF2101
Platform dimensions 580(w) x 298(d) x 1527(h)mm		
Ideal for safe high level stocking		
Integral folding steps act as brake when in use		

Trolleys



Two Step Stocking Table

WIDTH	DEPTH	CODE
640	470	
Integral folding steps act as brake		
Onboard storage box & shelving		
Manufactured from high quality zinc plated materials		



Bowl Trolley

DIAMETER		CODE
500		
Overall height 745mm		
Designed for the Healthcare Environment		
Durable welded construction		
Manufactured in the UK		



School Post Trolley

WIDTH	DEPTH	CODE
720	480	
With two locking casters		
Fully welded construction		
Quality Plywood shelving		



Plastic Bin Rack Trolley

WIDTH	DEPTH	CODE
970	756	
24 Rows of hooks for multi-bin configuration		
Front braked – Rear swivel castors		
Anti-Static coating for sensitive devices		

Trolleys



Baker's Basket Trolley

WIDTH	DEPTH	CODE
780	650	
Designed for bread cooling/distribution		
Manufactured from hygienic 304 Stainless Steel		
Strong, robust and fully sealed framework		
12 Month Guarantee		



Half Moon Mobile Trough

WIDTH	HEIGHT	CODE
700	1290	
170Ltr Capacity		
Designed for the Healthcare Environment		
Durable welded construction		
Manufactured in the UK		



Heavy Duty Tank Trolley

WIDTH	LENGTH	CODE
550	1400	GF0020
320Ltr Tank Capacity		
Constructed with Ø30mm Steel Tubing		
Complete with Polyethylene Tank		



Bin store Production Trolley

WIDTH	DEPTH	CODE
1175	620	FL0129
1425 Total height		
Food Contact Approved		
Bespoke variations available		

Trolleys



Plastic Trough Trolley

WIDTH	DEPTH	CODE
920	600	
Mobile Waste/Liquid Facility		
Polypropylene 20 Gallon Trough		
Strong, robust and fully welded framework		
12 Month Guarantee		



Cash Trolley

WIDTH	HEIGHT	CODE
1000	957	MORR1800
2 Level angled shelving		
Easy Glide Casters for smooth running		
Produced from high quality Stainless Steel		
Manufactured in the UK		



Short Back-Stock Cart

WIDTH	DEPTH	CODE
650	440	
Designed for limited space convenience stores		
Constructed with Ø30mm Steel Tubing		
Manufactured in the UK		



Triple Tray Trolley

WIDTH	DEPTH	CODE
1100	570	
Manufactured from 304 Stainless Steel		
Food Contact Approved		
Bespoke variations available		

Trolleys



Low Level Trolley

SIZE	HEIGHT	CODE
710 x 460	965	
Fully Collapsible for compact storage		
Manufactured from hygienic 304 Stainless Steel		
Ergonomic Design		
12 Month Guarantee		



Locking Product Trolley

SIZE	HEIGHT	CODE
1800x600	1110	
Complete with integral folding step facility		
Ideal for high value stock replenishment		
Internal waste compartment		
Manufactured in the UK		



Cafe Clearing Trolley

SIZE		CODE
620x420		
Flat Pack for easy assembly		
9 Tray capacity		
Locking casters		



Utility Trolley

WIDTH	DEPTH	CODE
1150	640	
Multi-purpose mobile platform or mobile table		
Unique folding platform & stocking step		
Large platform area for stock transportation		
Manufactured in the UK		

Trolleys



Bakery Flour Cart

SIZE	HEIGHT	CODE
710 x 460	965	
Manufactured from hygienic 304 Stainless Steel		
Robust Design		
12 Month Guarantee		



Mobile Filleting Trolley

SIZE	HEIGHT	CODE
900x400	650	
Built-In Knife Scabbard		
Locking Casters		
Internal waste compartment		
Manufactured in the UK		



Medical Equipment Trolley

SIZE		CODE
420x350		
Adjustable Tray Height		
Hygienic Stainless Steel		
Easy-Glide casters		

Utility Trolley

WIDTH	DEPTH	CODE
1150	640	
Multi-purpose mobile platform or mobile table		
Unique folding platform & stocking step		
Large platform area for stock transportation		
Manufactured in the UK		

Racking



Display Racking

SIZE	HEIGHT	CODE
Bespoke	Bespoke	
Can be designed to suit your dimensional needs		
Manufactured from hygienic 304 Stainless Steel		
2 braked & 2 swivel Castors		
12 Month Guarantee		



Food Warmer

SIZE	HEIGHT	CODE
1410x500	1730	
Manufactured from 304 DP Stainless Steel		
Integrated two tier heat lamps		
Manufactured in the UK		



Drainage Shelf

LENGTH	DEPTH	CODE
2.0 / 2.3 Mtr	300mm	
Manufactured from hygienic 304 Stainless Steel		
Supplied with 3 wall mounting brackets		



Food Storage Rack

SIZE	HEIGHT	CODE
940x490	360	
Stacking storage modular units		
Solid top or perforated for air circulation		
Manufactured in the UK		

Racking



Flat Pack Perforated Racking

WIDTHS AVAILABLE	CODE
900, 1200, 1500, 1800mm	
Static or mobile versions available	
Manufactured from hygienic 304 Stainless Steel	
Supplied as easy to assemble flat pack	
12 Month Guarantee	



Bakery Rack

SIZE	HEIGHT	CODE
780x520	1830	
Manufactured from 304 DP Stainless Steel		
Tube section fully sealed to prevent ingress		
To suit tray size: 762x457x92 (External size)		
Manufactured in the UK		



Bakery Impulse Tower

SIZE	HEIGHT	CODE
770 x 770	1320 TOP SHELF	
360 Degree Open Shelf Display		
Fixed 4 shelf profile		
Double sided A4 sign holder fitted at top of tower		



Bakery Impulse Stand

SIZE	HEIGHT	CODE
660x460	1500	
Fixed 5 basket shelf profile		
Data strip fitted to each shelf edge		
Removable wire chrome or BZP baskets		
Black satin finish or your store brand colours		

Racking



Heavy Duty Racking

SIZE	HEIGHT	CODE
730x480	1890	
Complete with 4 adjustable feet		
Fully Fabricated		
Four Shelves per unit as standard		
Manufactured in the UK		



Keyboard / Pipe Shelving

SIZE		CODE
470x180		
Manufactured from 304 DP Stainless Steel		
Integral wall mounting brackets		
Manufactured in the UK		



Mobile Chiller Racking



Mobile Storage Racking Set

SIZE	HEIGHT	CODE
1.0/1.5 x 0.5Mtr	1960mm	
Manufactured from lightweight Aluminium		
Delivered flat pack – easy to assemble		
Includes four shelves – extra available		

SIZE	HEIGHT	CODE
1.0/1.5 x 0.5Mtr	1960mm	
Manufactured from lightweight Aluminium		
Delivered flat pack – easy to assemble		
Static version available upon request		

Racking



Plain Shelf Racking

SIZE	HEIGHT	CODE
600, 900, 1200, 1500, 1800	1500	
Adjustable shelving		
Clean uncluttered lines in high quality stainless steel		
Easy to assemble flat pack design		
Manufactured from hygienic 304 DP Stainless Steel		



Mobile Tray Racking

SIZE	HEIGHT	CODE
750x520	1160	
Manufactured from 304 DP Stainless Steel		
One piece shelf construction for added strength		
Manufactured in the UK		
Fitted with four swivel castors		



Wall Shelf

WIDTH	DEPTH	CODE
1500	350	
Manufactured from 304 DP Stainless Steel		
Integral wall mounting brackets		
Alternative sizes available		



Nine Tier Bakery Rack

SIZE	HEIGHT	CODE
782x522	1965mm	FL0046
Manufactured from 304 Stainless Steel		
Fitted with four swivel castors		
Fully fabricated unit		

Sanitisers



Stand Alone Sanitiser Station

SIZE	HEIGHT	CODE
400x200	925 + Sign	
Internal storage for bulk container		
Powder coated to any colour		
Manufactured from quality materials		



Cleaning Station Shelves

SIZE	HEIGHT	CODE
450x500	1200	1200
Simple shelving for sanitiser products		
Height adjustable shelves		
Manufactured in the UK		
Powder Coated Mild Steel		



Foot Pedal Operated Dispenser

SIZE	HEIGHT	CODE
Ø100mm	1100	
'Hands Free' Foot operated		
Multi-size bottle capacity		
Powder Coated		



Mobile Sanitiser Station

SIZE	HEIGHT	CODE
650x650	1500mm	
Customer convenience in retail sector		
Basket storage can be replaced with waste bin		
Flat pack design for cost effective shipping		

Sanitisers



Wall Mounted Dispenser

SIZE	HEIGHT	CODE
400x200	925 + Sign	
Infra-Red hands-free operation		
Built-in face covering holder		
Manufactured from quality materials		



Wall Mounted Gel Bracket

SIZE	HEIGHT	CODE
150	300	
Simple wall bracket for sanitiser products		
Manufactured from hygienic 304 Stainless Steel		
Incorporated sign		
Combined drip tray		



Free Standing IR Dispenser

SIZE	HEIGHT	CODE
400x400	1400	
'Hands Free' Operation		
Rear door internal replenishment storage		
Powder Coated in choice of colours		



Door Entry Sanitiser Station

SIZE	HEIGHT	CODE
450x600	1500mm	
Integrated waste bin		
Removable drip tray		
Hands-free Gel Dispenser		

Point Of Sale



Ticket Holders

SIZE	HEIGHT	Please contact us for details
Various	Bespoke	
Manufactured from hygienic 304 DP Stainless Steel		
Can be powder coated to any colour		



Display Gondola

SIZE	HEIGHT	CODE
1000	2000	RB324
Bespoke sizes available		
Stainless steel welded construction		
Manufactured in the UK		



Mirror Polished Signs

SIZE	HEIGHT	Please contact us for details
Various	Bespoke	
Manufactured from Stainless Steel		
Mirror polished finished with coloured lettering		



PoS Labels

SIZE	Please contact us for details
To suit holders	
Any size/text available	

Point Of Sale



Cosmetics Presentation Stand

SIZE	HEIGHT	Please contact us for details
Various	Bespoke	
Manufactured from hygienic 304 DP Stainless Steel		
Can be powder coated to any colour		



Digital Store Finder

SIZE	HEIGHT	Please contact us for details
750	1200	
Bespoke sizes available		
Stainless steel welded construction		
Manufactured in the UK		



Coffee Mini Bar

SIZE	HEIGHT	Please contact us for details
Various	Bespoke	
Manufactured from Stainless Steel		
Mirror polished finished with coloured lettering		

PoS Labels

SIZE	CODE
To suit holders	
Any size/text available	

Miscellaneous



Boot Wash Station

SIZE	HEIGHT	CODE
400x200	925 + Sign	
Internal storage for bulk container		
Powder coated to any colour		
Manufactured from quality materials		



Cafe Chair - Etched Logo

SIZE	HEIGHT	CODE
Brushed Stainless Steel Seat & Back		
Etched with customer's logo or text		
Any colour powder coating available		



LED Light Wall

SIZE	HEIGHT	Please contact us for details
5Mtr	2.5Mtr	
Manufactured to customer's bespoke design		
Powder Coated		



Mannequin Stand

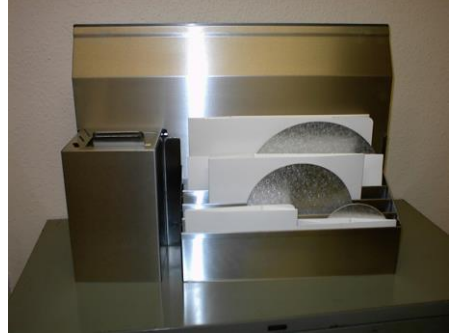
SIZE	HEIGHT	CODE
400x400	<1500mm	
Finished in highly polished steel		
Weighted base for stability		
Thumbscrew for vertical height adjustment		

Miscellaneous



Baguette Slicer

SIZE	HEIGHT	CODE
N/A	N/A	13800
Fast, Safe & Efficient Baguette Slicer		
Adjustable for bread length		
Manufactured from Food Safe 304 Stainless Steel		



Cake Display

Designed specifically for cake decoration
Utensil holder for knives, ribbon etc.
Brushed DP 304 Stainless Steel
Glass platforms for three tier cakes
Manufactured in the UK



Agricultural Machinery

Please contact us for details
Poultry Farm Equipment
Manufactured to Customer's Precise Specifications



Heavy Duty Sack Cart

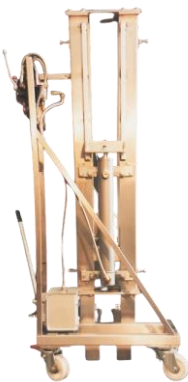
WIDTH	DEPTH	CODE
526	230	MORR7900
Up to 300kg Capacity		
Fitted with Ø200mm Rubber wheels		
Manufactured from high quality materials		

Engine Mover



Specialised vehicle designed & Manufactured by Metalcraft Industries for Test Cell Moving.

With a load capacity of 40 Tonnes



Hydraulic Lifting Machine

WIDTH	DEPTH	CODE
Bespoke	Bespoke	
Designed & Constructed to Customer Specification		
Unique Bespoke Lifting Solution		
Manufactured from high quality materials		